

MIDDLE SANTIAM WILD AND SCENIC RIVER

As proposed in the River Democracy Act of 2021

Santiam Basin | Linn County | Proposed Miles: 28.5 | Willamette National Forest



The headwater streams and wildlands of the Middle Santiam form important connections of ancient forest habitat between surrounding watersheds, offer spectacular scenery and recreation, and shelter a vital water resource upstream of existing protected Wilderness.

What makes the Middle Santiam special?

RECREATION: Several stellar hiking trails follow proposed river segments through pristine old growth forests - along South Pyramid Creek, Swamp Creek, the Middle Fork Santiam, and in the headwaters of Scar Creek. Several of these trails connect to the Middle Santiam Wilderness and other backcountry areas where those looking for solitude can have an amazing experience. Some of these streams are also used by whitewater paddlers, including Pyramid Creek and a sought after multi-day segment through the Middle Santiam Wilderness.

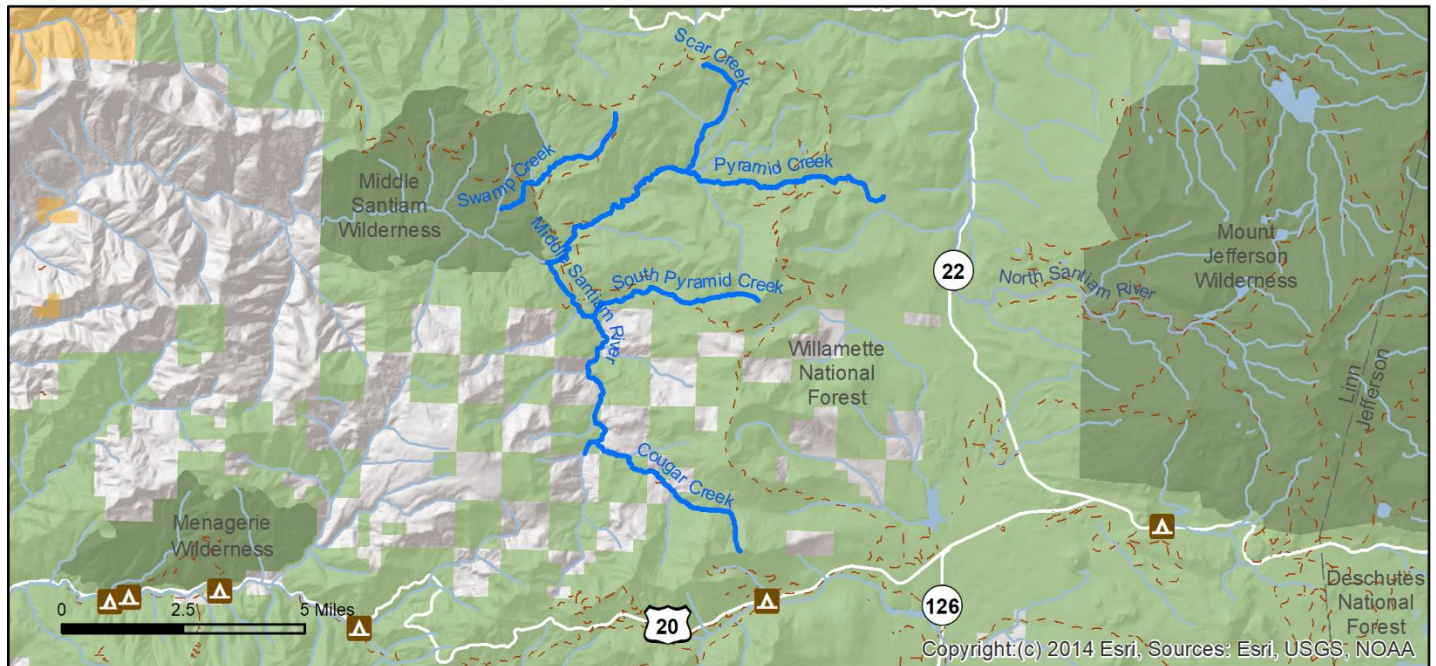
SCENERY: Part of the geology of the old Cascades, the area has beautiful and unique landforms, and spectacular old forests accessible much of the year.

FISH: While Green Peter Dam and reservoir block most fish passage further downstream, the upper Middle Santiam basin offers a quality trout fishery, and has healthy populations of coastal cutthroat.

WILDLIFE: The remnant old growth forests found in the upper Middle Santiam provide essential, nearly undisturbed, habitat for wildlife of all kinds, and including threatened northern spotted owls. The stream network connects low to mid elevations between Quartzville Creek and the McKenzie River drainages, providing essential habitat connectivity.

ECOLOGICAL/BIOLOGICAL DIVERSITY: The remnant old growth forests in the upper Middle Santiam are found in large blocks that provide impressive examples of an intact forest ecosystem in the western Cascades. The National Forest largely manages the area for its primitive nature and to enhance old growth characteristics.

Proposed Middle Santiam Wild and Scenic River Segments



<i>Segment Name</i>	<i>Length</i>	<i>Proposed Classification</i>
Mainstem, Upper	5.4 Miles	Scenic
Swamp Creek	2.6 Miles	Scenic
Pyramid Creek	9.2 Miles	Scenic
South Pyramid Creek	3.9 Miles	Scenic
Cougar Creek	4.4 Miles	Scenic
Scar Creek	3.0 Miles	Scenic
Total	29.6 miles	

The USFS has deemed the upper main-stem of the Middle Santiam as eligible for Wild & Scenic status. While much of the area is designated as Late Successional Reserves, Riparian Reserves, and Roadless Areas, damaging logging still takes place too near some of these streams. This proposal is supported by Friends of the Douglas-fir National Monument, Oregon Wild, American Whitewater and other partners in the Oregon Wild & Scenic River Coalition.